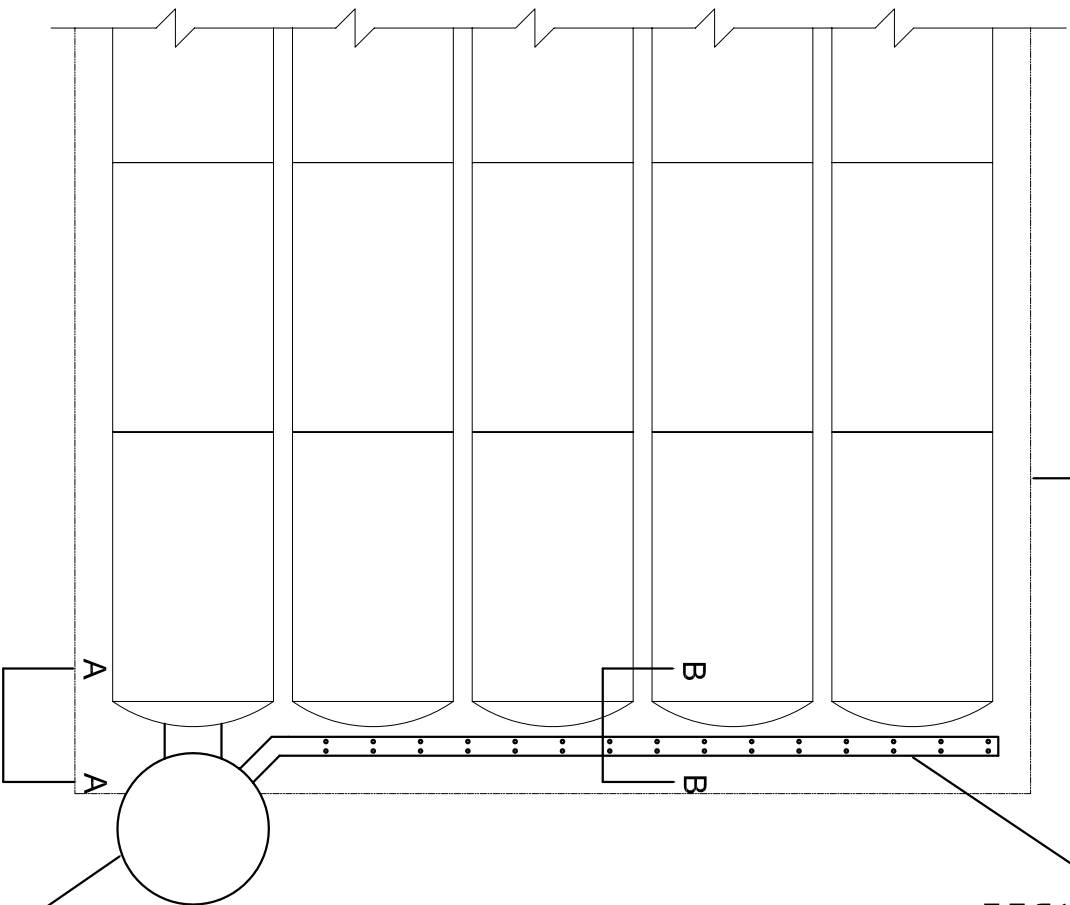
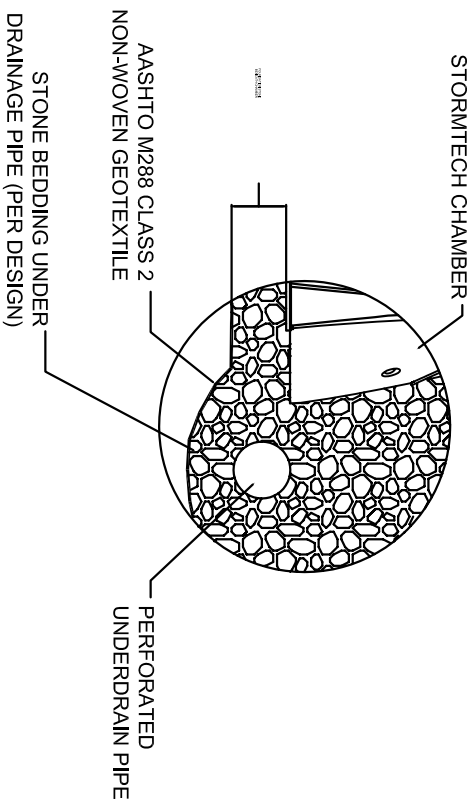
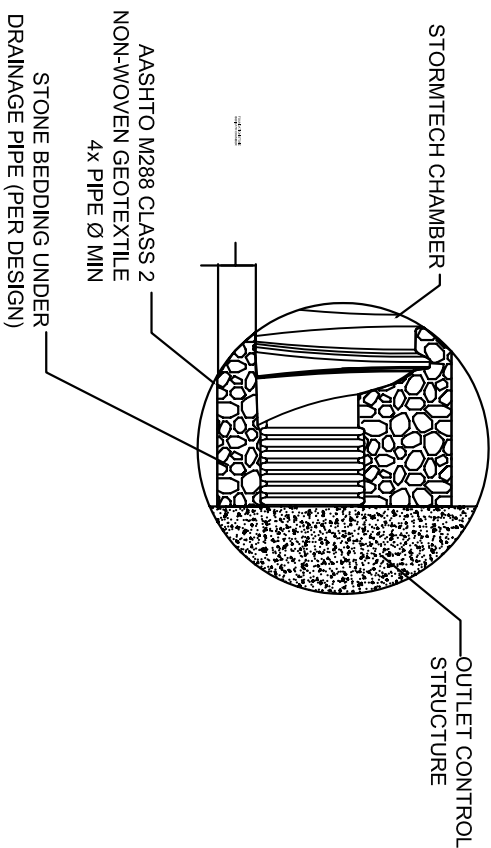


BED PERIMETER



NUMBER AND SIZE OF UNDERDRAINS PER ENGINEER DESIGN

OUTLET CONTROL STRUCTURE PER ENGINEER'S DESIGN



STORMTECH LLC CONCEPTUAL PLAN DISCLAIMER

THIS STORMTECH CHAMBER SYSTEM LAYOUT WAS PRODUCED TO DEMONSTRATE A BED LAYOUT THAT WILL HANDLE THE DESIGN VOLUME LISTED ABOVE. THE SIZING, FIT AND APPLICABILITY OF THE STORMTECH CHAMBER SYSTEM FOR THIS SPECIFIC PROJECT HAS NOT BEEN DETERMINED. IT IS THE ULTIMATE RESPONSIBILITY OF THE DESIGN ENGINEER TO ASSURE THAT THE STORMWATER SYSTEM DESIGN IS IN FULL COMPLIANCE WITH ALL APPLICABLE LAWS AND REGULATIONS. STORMTECH PRODUCTS MUST BE DESIGNED AND INSTALLED IN ACCORDANCE WITH STORMTECH'S MINIMUM REQUIREMENTS. STORMTECH LLC DOES NOT APPROVE PLANS, SIZING, OR SYSTEM DESIGNS. THE DESIGNING ENGINEER IS RESPONSIBLE FOR ALL DESIGN DECISIONS.

* NOTE: CHAMBER SYSTEM DESIGN MUST BE IN ACCORDANCE WITH STORMTECH DESIGN MANUAL

Stormtech
Division-Resilience+Recharge
Subsurface Stormwater Management™

20 Bedver Road, Suite 104
 Weathersfield, CT 06109
 Phone: 888-892-2694
 Fax: 866-328-8401
 www.stormtech.com

STORMTECH UNDERDRAIN DETAIL

SCALE:	NTS	CHECKED	
DATE:		ACAD NO.	
DRAWN BY:		SHEET	OF