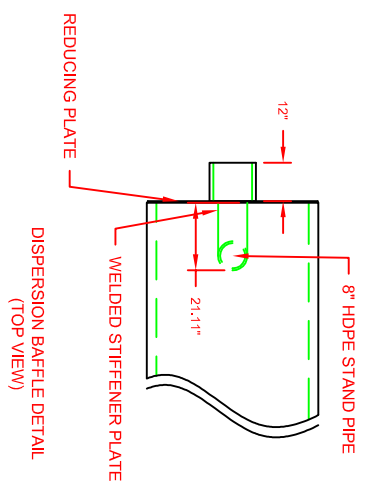
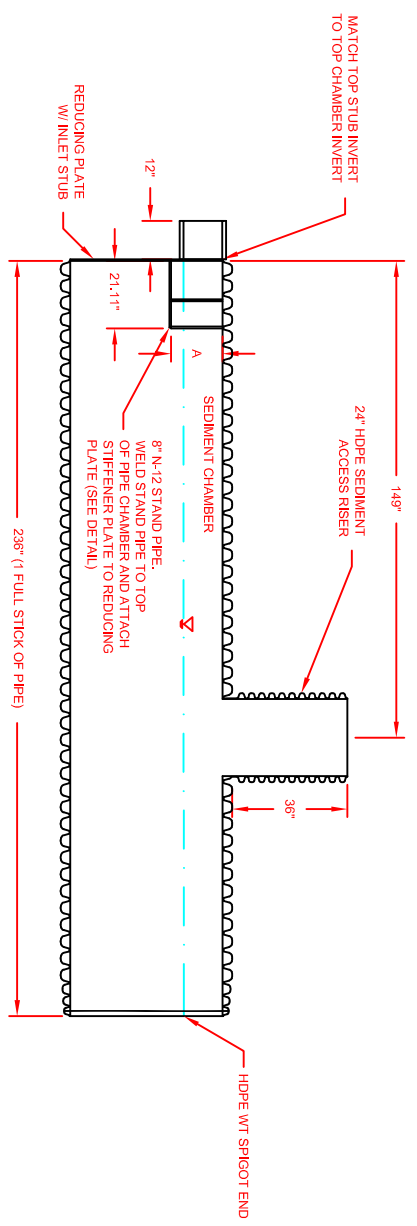


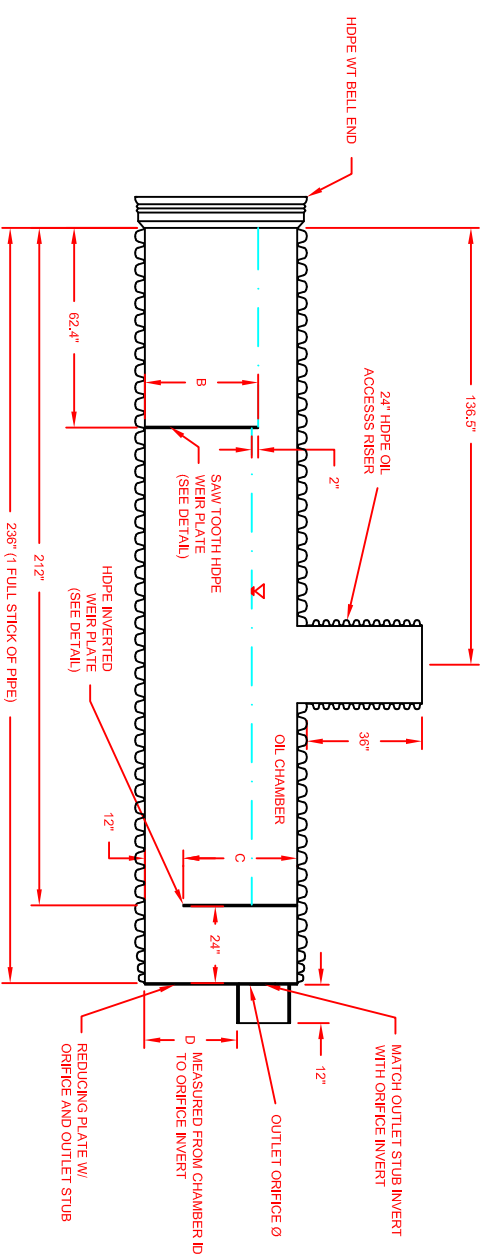
HDPE INVERTED WEIR PLATE FOR OIL CHAMBER



DISPERSION BAFFLE DETAIL (TOP VIEW)



SECTION 1



SECTION 2

PRODUCT #	MAIN PIPE DIA.	TREAT. FLOW RATE	SLIWE SIZE	INLET STUB DIA.	OUTLET STUB DIA.	ORIFICE DIA.	A	B	C	D
364QWQAXX	36"	2.38 CFS	140	10"	10"	9.9"	13.9"	26"	24"	24"
364QWQBXX	36"	1.60 CFS	200	10"	10"	8.08"	13.9"	26"	24"	24"
424QWQAXX	42"	3.66 CFS	140	12"	12"	11.75"	16.1"	30"	30"	28"
424QWQBXX	42"	1.83 CFS	200	12"	12"	8.31"	16.1"	30"	30"	28"
484QWQAXX	48"	3.94 CFS	140	12"	12"	12.15"	16.1"	36"	36"	34"
484QWQBXX	48"	2.39 CFS	200	12"	12"	9.5"	16.1"	36"	36"	34"
604QWQAXX	60"	6.23 CFS	140	15"	15"	14.61"	18.9"	45"	48"	43"
604QWQBXX	60"	3.12 CFS	200	15"	15"	10.34"	18.9"	45"	48"	43"

XX DENOTES A BY-PASS SIZE OF 15", 18", 24", 30", 36", 42", 48", OR 60"
 XX-00 DENOTES UNITS W/OUT A BY-PASS.

© 2007 HANCOR, INC.

HANCOR, INC. HAS PREPARED THIS DETAIL BASED ON INFORMATION PROVIDED TO HANCOR. THIS DRAWING IS INTENDED TO DEPICT THE COMPONENTS AS REQUESTED. HANCOR HAS NOT PERFORMED ANY ENGINEERING OR DESIGN SERVICES FOR THIS PROJECT. NOR HAS HANCOR INDEPENDENTLY VERIFIED THE INFORMATION SUPPLIED. THE INSTALLATION DETAILS PROVIDED HEREIN ARE GENERAL RECOMMENDATIONS AND ARE NOT SPECIFIC FOR THIS PROJECT. THE DESIGN ENGINEER SHALL REVIEW THESE DETAILS PRIOR TO CONSTRUCTION. IT IS THE DESIGN ENGINEERS RESPONSIBILITY TO ENSURE THE DETAILS PROVIDED HEREIN MEETS OR EXCEEDS THE APPLICABLE NATIONAL, STATE, OR LOCAL REQUIREMENTS AND TO ENSURE THAT THE DETAILS PROVIDED HEREIN ARE ACCEPTABLE FOR THIS PROJECT.

- NOTES:
1. THE UNIT WILL BE SHIPPED AS 2 PIECES SECTION 1 AND SECTION 2 WILL BE FIELD CONNECTED
 2. ALL DIMENSIONS ARE NOMINAL
 3. ALL FITTING CONNECTIONS WILL BE MADE USING A STANDARD BELL/BELL OR SPLT COUPLER

REV.	DESCRIPTION	CRIM	DATE	CHKD
2	FR/REMOVE NO ORIFICE NOTE	CRIM	05/18/10	CHKD

STANDARD 40-PT STORM WATER QUALITY UNIT

DRAWING NUMBER: **STD-502**

401 OLIVE ST.
 FINDLAY, OHIO 45839

DRAWN BY	CKS
DATE	10/26/07
SCALE	NTS
SHEET	OF